

PAS series

Side channel self priming stainless steel pump



Flow rate up to 240 l/min



Head up to 60 meters



Operating temperature max 110°C



Operating pressure max 7 bar



Motors from 0.3 HP to 6 HP – 1400/2800 RPM



Entirely made of AISI 304/316 high thickness stainless steel



Suitable for aggressive liquids

Self-priming pump

Side channel self priming pump able to handle liquids with dissolved gases and to operate at a depth of up to 5 meters

Variable flow rate

The PAS series pumps are fitted with an internal bypass, which can be adjusted to partly reduce the flow rate

Reduced speed

Some models are supplied with a 1400 RPM motor, which ensures a softer and more gentle pumping action



High-thickness pump casing

High thickness steel (3mm) which ensures a higher mechanical and corrosion resistance, and therefore a longer life

Explosion risk zones

To operate in zones at risk of explosion, motors compliant with Atex standards are supplied

Flow reversibility

On request, a motor that can reverse its direction of rotation is supplied, to ensure full flow reversibility

Stainless steel impeller

The impeller is made from microcasting of AISI 304 or 316 stainless steel. Its shape has been optimized to ensure a high hydraulic efficiency



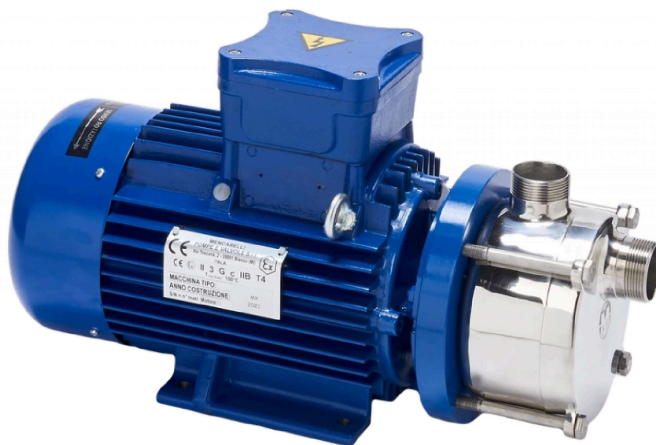
Internal suction filter

The PAS series pumps are the only pumps fitted with an internal filter that allows any impurity in the fluid to be collected. The filter can be easily removed to carry out inspection and cleaning operations



Greater safety

To allow using PAS pumps in potentially explosive environments Atex motors are supplied



The PAS series pumps have the following features:

- Priming at a depth of up to 5 m with the pump filled
- Flow reversibility available on request
- Suction filter fitted to collect any impurity that may be present in the liquid
- Suitable for handling aggressive liquids
- Fitted with a bypass to partly adjust the flow rate/head
- High thickness steel (3mm) which ensures a higher mechanical and corrosion resistance, and therefore a longer life
- High hydraulic efficiency
- Explosion proof motors can be provided to pump flammable liquids
- Microcast impeller from AISI 304/306 stainless steel
- Mechanical seal with NBR, FPM or PTFE elastomers

Their resistance to chemical aggression makes them suitable for the **chemical** , **pharmaceutical** and **textile** industry, while their versatility makes them suitable for the **wine-food** industry.

On request, pumps can be supplied on a stainless steel carriage fitted with a switch/rotation direction inverter.

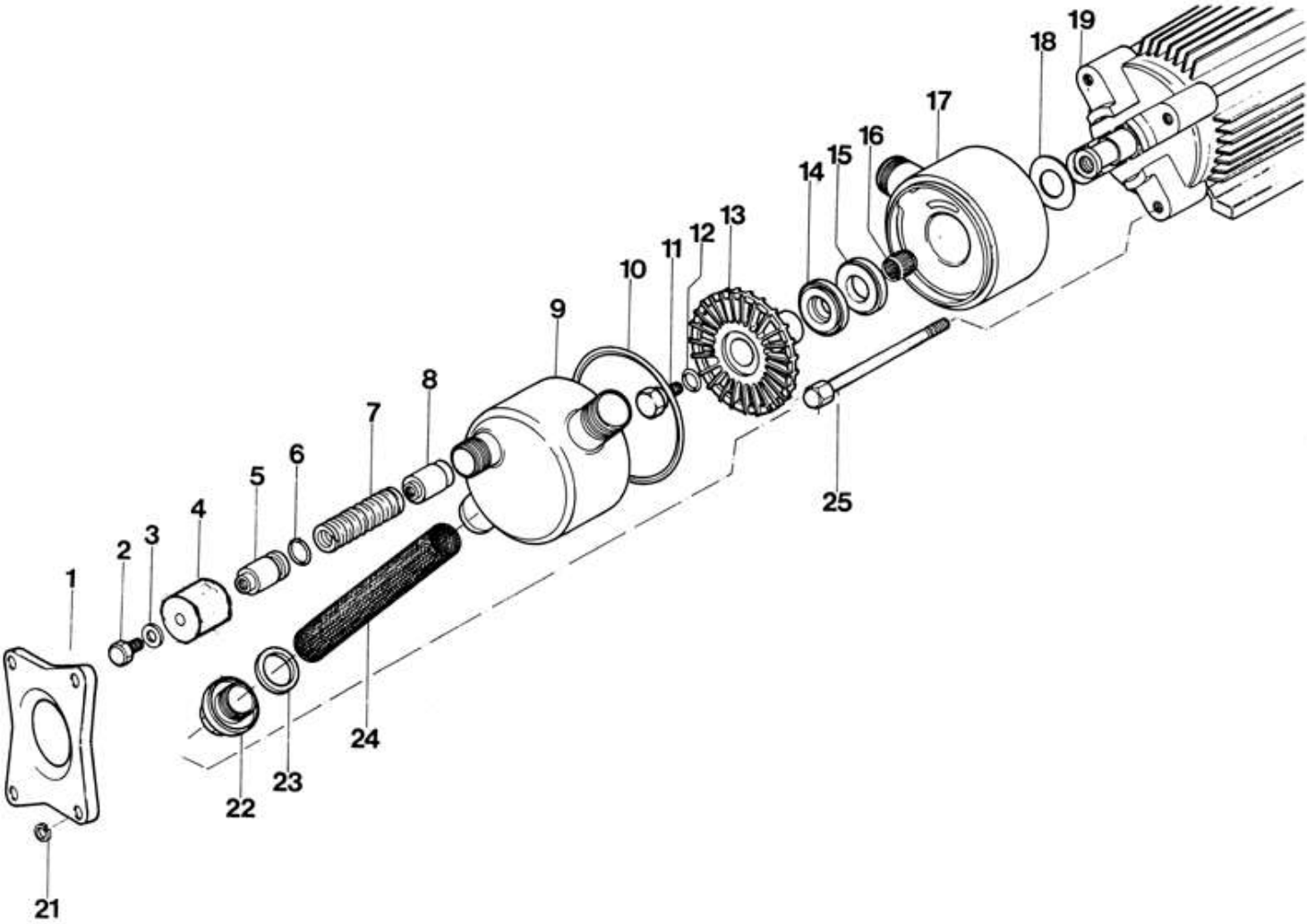
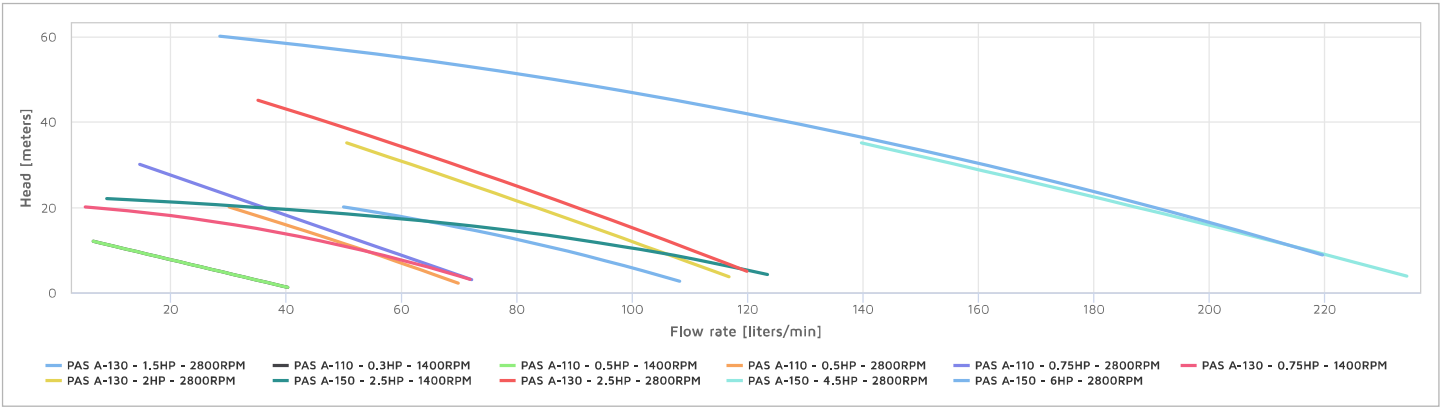
The pumps can also be supplied with DIN 11851, Garolla or Macon fittings.

Technical Specifications

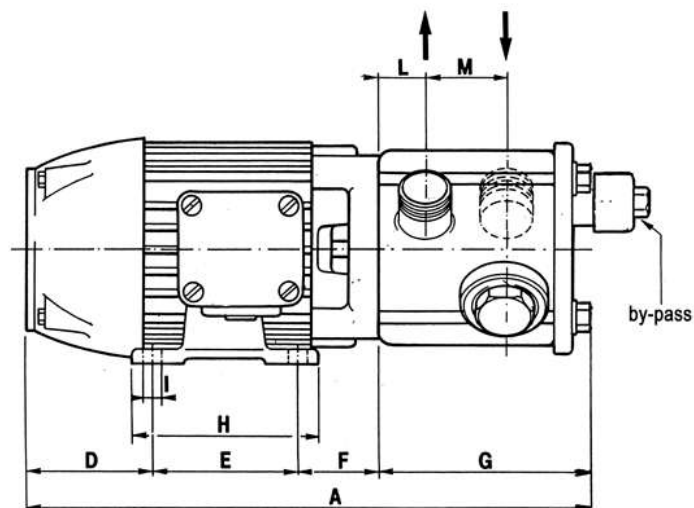
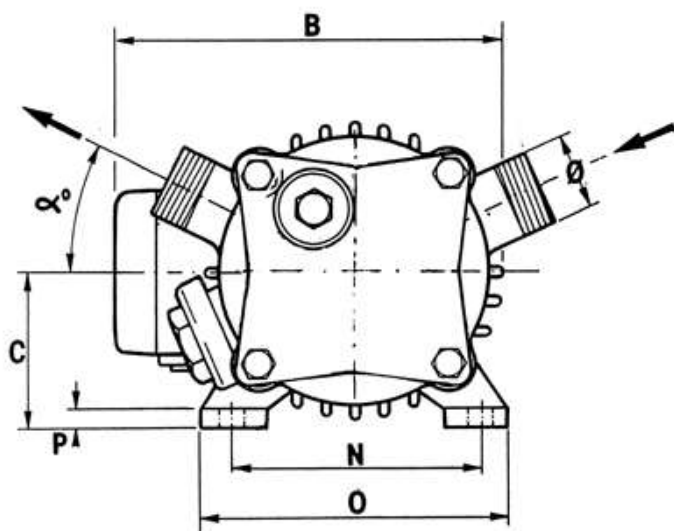
Power and capacity are referred to working with water

MOD	MOTOR			FLOW RATE [lt/min] ± 5%															Ø PORTS
	HP	RPM	TYPE	0 meters	5 meters	10 meters	12 meters	15 meters	20 meters	22 meters	25 meters	30 meters	35 meters	40 meters	45 meters	50 meters	55 meters	60 meters	
A-110	0.3	1400	Single-phase	44	28	13	7	-	-	-	-	-	-	-	-	-	-	-	Ø 1" BSP male thread
	0.5	1400	Three-phase	44	28	13	7	-	-	-	-	-	-	-	-	-	-	-	
	0.5	2800	Single-phase	76	64	53	49	42	30	-	-	-	-	-	-	-	-	-	
	0.75	2800	Three-phase	79	68	57	53	47	36	32	25	15	-	-	-	-	-	-	
A-130	0.75	1400	Three-phase	79	67	53	46	35	5	-	-	-	-	-	-	-	-	-	Ø 1 ¼" BSP male thread
	1.5	2800	Single-phase	115	102	88	81	71	50	-	-	-	-	-	-	-	-	-	
	2	2800	Three-phase	124	114	104	100	94	83	79	72	62	51	-	-	-	-	-	
	2.5*	2800	Three-phase	129	120	110	106	100	90	86	80	69	58	47	35	-	-	-	
A-150	2.5*	1400	Three-phase	136	121	102	93	76	34	9	-	-	-	-	-	-	-	-	Ø 1 ½" BSP male thread
	4.5*	2800	Three-phase	245	231	217	211	202	187	-	-	-	-	-	-	-	-	-	
	6*	2800	Three-phase	241	229	217	212	204	190	185	176	161	144	127	107	86	60	29	

*The electrical power of these models may vary according to the brand of the motors and the Atex execution. However, the performance of the pump remains unchanged.



REF	DESCRIPTION	MATERIALS
1	Flange	Stainless Steel
2	By-Pass Cap Screw	Stainless Steel
3	Washer	Stainless Steel
4	By-Pass Cap	Stainless Steel
5	Piston	Stainless Steel
6	Piston O-Ring	NBR or FPM
7	Spring	Stainless Steel
8	Valve	Stainless Steel
9	Casing Suction Side	AISI 304 or 316 Stainless Steel
10	Body Seal Ring	NBR or FPM
11	Impeller Screw	Stainless Steel
12	Impeller Screw O-Ring	NBR or FPM
13	Impeller	AISI 304 or 316 Stainless Steel
14	Seal Rotating Part	Graphite, Stainless Steel, NBR or FPM or PTFE
15	Seal Fixed Part	Ceramic, NBR or FPM or PTFE
16	Compensation Ring	Steel
17	Casing Delivery Side	AISI 304 or 316 Stainless Steel
18	Spacing Ring	AISI 304 or 316 Stainless Steel
19	Electric Motor	---
21	Washer	Steel
22	Filter Cap	AISI 304 or 316 Stainless Steel
23	Filter Cap Seal	NBR or FPM or PTFE
24	Filter	AISI 304 or 316 Stainless Steel
25	Tie Rod	Stainless Steel



MOD	MOTOR		Dimensions [mm]														α [deg]	Ø PORTS
	HP	RPM	TO	B	C	D	AND	F	G	H	THE	THE	M	N	OR	P		
A-110	0.3	1400	345	182	72	75	90	50	130	101	8	27	58	112	137	10	25°	1"
	0.5	1400		188														
	0.5	2800		182														
	0.75	2800		188														
A-130	0.75	1400	400	208	80	87	100	55	158	122	10	30	74	125	155	10	25°	1 1/4"
	2	2800	410	225	90	90	100	62	158	125	10	30	74	140	175	12	25°	
	2.5	2800	435	225	90	90	125	62	158	150	10	30	74	140	172	13	25°	
A-150	2.5	1400	485	255	100	97	140	73	175	170	12	41	71	160	198	13	25°	1 1/2"
	4.5	2800	518	280	112	108	140	95	175	172	13	41	71	190	227	17	25°	
	6	2800	520	280	112	110	140	95	175	172	13	41	71	190	227	17	25°	

Mencarelli Pompe e Valvole srl
 Via Toscana 2 - 20091 Bresso (MI) - ITALY
 Tel: [+39 2 66401099](tel:+39266401099) (3 lines) - Fax: [+39 2 66401103](tel:+39266401103)
 VAT Number: 08770190158

Reporting of public grants (pursuant to articles 125-129 - Law 124/2017)

With reference to Article 1, paragraph 125-bis, Law No. 124/2017, it should be noted that the company received, during the 2020 financial year, guarantees from the State on repayable loans.
 The National Register of State Aid pursuant to Article 52 of Law 234/2012 contains the aid received by our company during 2020. This information can be freely consulted by entering our tax code: 08770190158 at the following [link](#).