

P/L series

Side channel stainless steel centrifugal pump



Flow rate up to 265 l/min



Head up to 60 meters



Operating temperature max 110°C



Operating pressure max 7 bar



Motors from 0.3 HP to 6 HP – 1400/2800 RPM



Entirely made of AISI 304/316 high thickness stainless steel



Suitable for aggressive liquids

High-thickness pump casing

High thickness steel (3 mm) which ensures a higher mechanical and corrosion resistance, and therefore a longer life

Small size

Extremely compact and lightweight pump, still maintaining its performance and high efficiency

Reduced speed

Some models are supplied with a 1400 RPM motor, which ensures a softer and more gentle pumping action



Flow reversibility

On request, a motor that can reverse its direction of rotation is supplied, to ensure full flow reversibility

Explosion risk zones

To operate in zones at risk of explosion, motors compliant with Atex standards are supplied

Maximum hygiene

The pump casing is internally and externally polished to ensure the highest level of hygiene and hydraulic efficiency

Stainless steel impeller

The impeller is made from microcasting of AISI 304 or 316 stainless steel. Its shape has been optimized to ensure a high hydraulic efficiency



Greater safety

To allow using P/L pumps in potentially explosive environments Atex motors are supplied

The P/L series pumps have the following features:

- Flow reversibility available on request
- Possibility to handle aggressive liquids
- High thickness steel (3mm) which ensures a higher mechanical and corrosion resistance, and therefore a longer life
- High hydraulic efficiency
- Explosion proof motors can be provided to pump flammable liquids
- Microcast impeller from AISI 304/306 stainless steel
- Mechanical seal with NBR, FPM or PTFE elastomers

Their resistance to chemical aggression makes them suitable for the **chemical** , **pharmaceutical** and **textile** industry, while their versatility makes them suitable for the **wine-food** industry.

On request, pumps can be supplied on a stainless steel carriage fitted with a switch/rotation direction inverter.

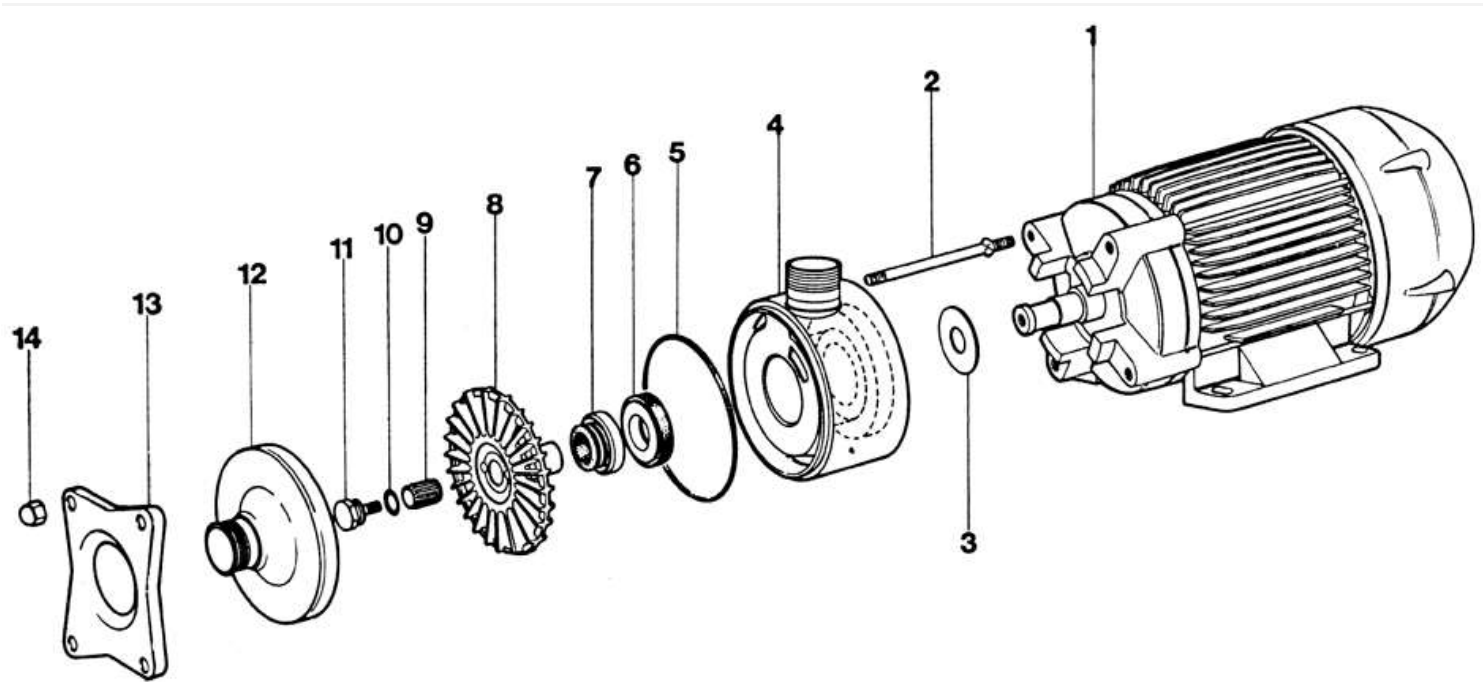
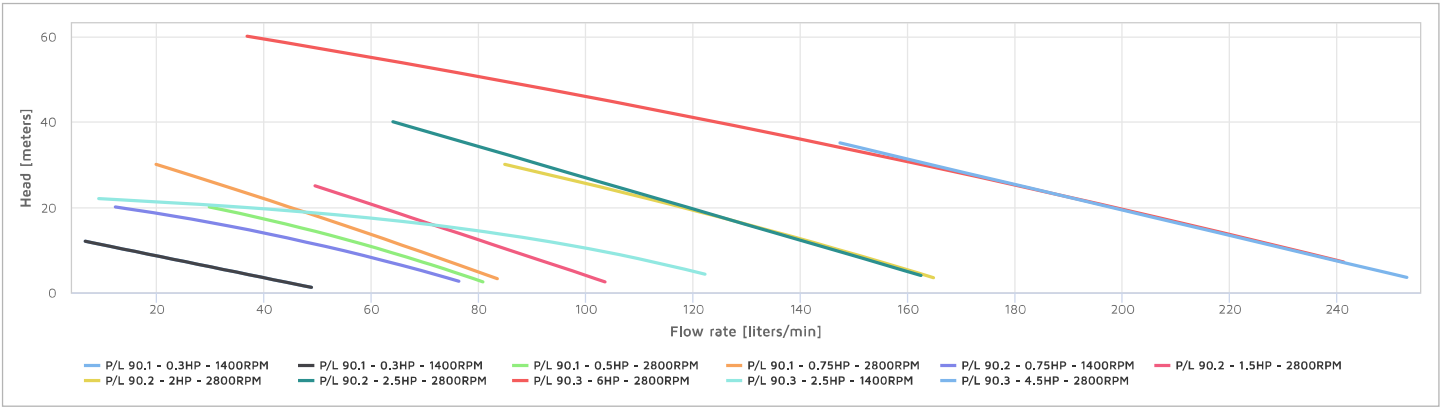
The pumps can also be supplied with DIN 11851, Garolla or Macon fittings.

Technical Specifications

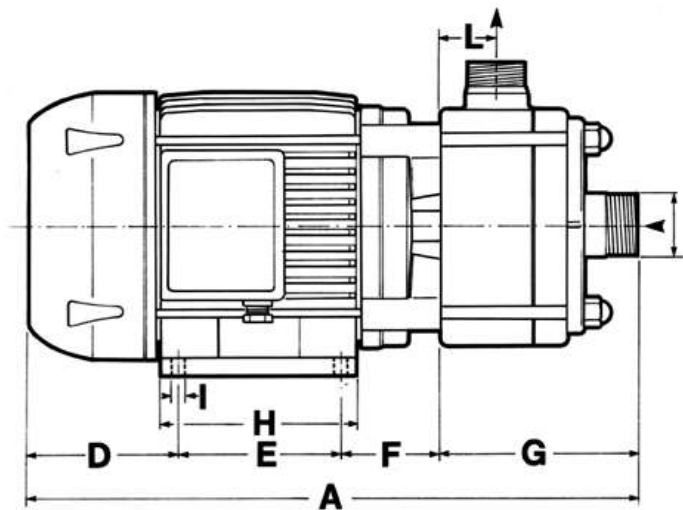
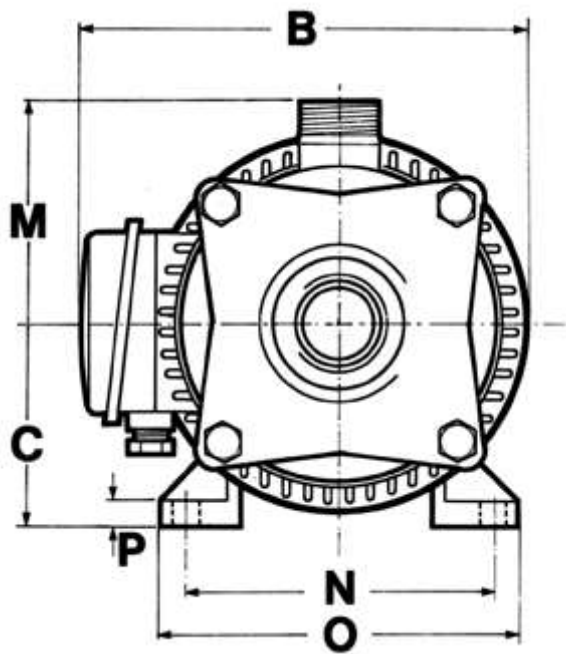
Power and capacity are referred to working with water

MOD	MOTOR			FLOW RATE [lt/min] ± 5%															Ø PORTS
	HP	RPM	TYPE	0 meters	5 meters	10 meters	12 meters	15 meters	20 meters	22 meters	25 meters	30 meters	35 meters	40 meters	45 meters	50 meters	55 meters	60 meters	
P/L 90.1	0.3	1400	Single-phase	53	34	14	7	-	-	-	-	-	-	-	-	-	-	-	Ø 1" BSP male thread
	0.5	1400	Three-phase	53	34	14	7	-	-	-	-	-	-	-	-	-	-	-	
	0.5	2800	Single-phase	86	75	62	56	47	30	-	-	-	-	-	-	-	-	-	
	0.75	2800	Three-phase	91	79	68	64	57	45	40	32	20	-	-	-	-	-	-	
P/L 90.2	0.75	1400	Three-phase	83	70	54	47	36	12	-	-	-	-	-	-	-	-	-	Ø 1 ¼" BSP male thread
	1.5	2800	Single-phase	110	98	85	81	73	61	57	49	-	-	-	-	-	-	-	
	2	2800	Three-phase	174	161	147	142	133	118	111	102	85	-	-	-	-	-	-	
	2.5*	2800	Three-phase	173	160	146	141	132	119	113	105	91	78	64	-	-	-	-	
P/L 90.3	2.5*	1400	Three-phase	135	120	102	93	77	35	9	-	-	-	-	-	-	-	-	Ø 1 ½" BSP male thread
	4.5*	2800	Three-phase	265	248	231	224	214	198	191	181	164	147	-	-	-	-	-	
	6*	2800	Three-phase	264	248	232	225	215	198	191	180	162	143	124	104	82	60	37	

*The electrical power of these models may vary according to the brand of the motors and the Atex execution. However, the performance of the pump remains unchanged.



REF	DESCRIPTION	MATERIALS
1	Electric Motor	---
2	Tie Rod	Stainless Steel
3	Spacing Ring	Stainless Steel
4	Casing Delivery Side	AISI 304 or 316 Stainless Steel
5	Body Seal Ring	NBR or FPM
6	Seal Fixed Part	Ceramic, NBR or FPM or PTFE
7	Seal Rotating Part	Graphite, Stainless Steel, NBR or FPM or PTFE
8	Impeller	AISI 304 or 316 Stainless Steel
9	Star Ring	---
10	Impeller Screw O-Ring	NBR or FPM
11	Impeller Screw	AISI 316 STAINLESS STEEL
12	Casing Suction Side	AISI 304 or 316 Stainless Steel
13	Flange	AISI 304 Stainless Steel
14	Lock Nut	Stainless Steel



MOD	MOTOR		Dimensions [mm]													
	HP	RPM	TO	B	C	D	AND	F	G	H	THE	THE	M	N	OR	P
P/L 90.1	0.3	1400	320	182	71	75	90	50	105	101	8	27	94	112	137	10
	0.5	1400		188												
	0.5	2800		182												
	0.75	2800		188												
P/L 90.2	0.75	1400	360	208	79	87	100	55	118	122	10	30	101	125	155	10
	2	2800	370	225	94	90	100	62	118	125	10	30	101	140	175	12
	2.5	2800	395	225	94	90	125	62	118	150	10	30	101	140	172	13
P/L 90.3	2.5	1400	445	255	97	97	140	73	135	170	12	41	113	160	198	13
	4.5	2800	478	280	112	140	108	95	135	172	13	41	113	190	227	17
	6	2800	480	280	112	140	110	95	135	172	13	41	113	190	227	17

Mencarelli Pompe e Valvole srl
 Via Toscana 2 - 20091 Bresso (MI) - ITALY
 Tel: [+39 2 66401099](tel:+39266401099) (3 lines) - Fax: [+39 2 66401103](tel:+39266401103)
 VAT Number: 08770190158

Reporting of public grants (pursuant to articles 125-129 - Law 124/2017)

With reference to Article 1, paragraph 125-bis, Law No. 124/2017, it should be noted that the company received, during the 2020 financial year, guarantees from the State on repayable loans.
 The National Register of State Aid pursuant to Article 52 of Law 234/2012 contains the aid received by our company during 2020. This information can be freely consulted by entering our tax code: 08770190158 at the following [link](#).