

QUAD series

Stainless steel self-priming pump for high flow rates



Flow rate up to 750 l/min



Head up to 25 meters



Operating temperature max 110°C



Operating pressure max 4 bar



Motors from 4 HP to 7.5 HP – 2800 RPM



Entirely made of AISI 304/316 high thickness stainless steel



Suitable for aggressive liquids with suspended solids

Self-priming pump

Self-priming pump able to handle liquids with dissolved gases and to operate at a depth of up to 5 meters

Open-type impeller

The open-type impeller is entirely made of stainless steel and is suitable for handling dirty, solid-laden liquids

Small size

The QUAD pump is very compact and, on request, can be supplied with a practical stainless steel carriage for easy transportation



High-thickness pump casing

High thickness steel (3mm) which ensures a higher mechanical and corrosion resistance, and therefore a longer life

Explosion risk zones

To operate in zones at risk of explosion, motors compliant with ATEX standards are supplied

Easy to dismantle

The cleaning and replacement of the mechanical seal and of the impeller are incredibly simple as the pump can be taken apart with ease

Maximum hygiene

The pump casing is internally and externally polished to ensure the highest level of hygiene. In addition, the internal surfaces are smooth and with no sharp edges to provide high hydraulic efficiency



Greater safety

To allow using QUAD pumps in potentially explosive environments Atex motors are supplied



The QUAD series pumps have the following features:

- Priming at a depth of up to 5 m with the pump filled
- Its flow rate makes it suitable for medium/large transfers, whilst keeping a good head
- Open-type stainless steel impeller, making it suitable for handling dirty liquids
- Suitable for handling aggressive liquids
- High thickness steel (3mm) which ensures a higher mechanical and corrosion resistance, and therefore a longer life
- High hydraulic efficiency
- Explosion proof motors can be provided to pump flammable liquids
- Mechanical seal with NBR, FPM or PTFE elastomers

Their resistance to chemical aggressiveness makes them suitable for the **chemical** , **pharmaceutical** and **textile** industries, their capacity to pump dirty liquids makes them suitable for the **treatment of waters** in general and of **industrial waste** , while their versatility suits the **wine and food** industry.

On request, pumps can be supplied on a stainless steel carriage fitted with a switch.

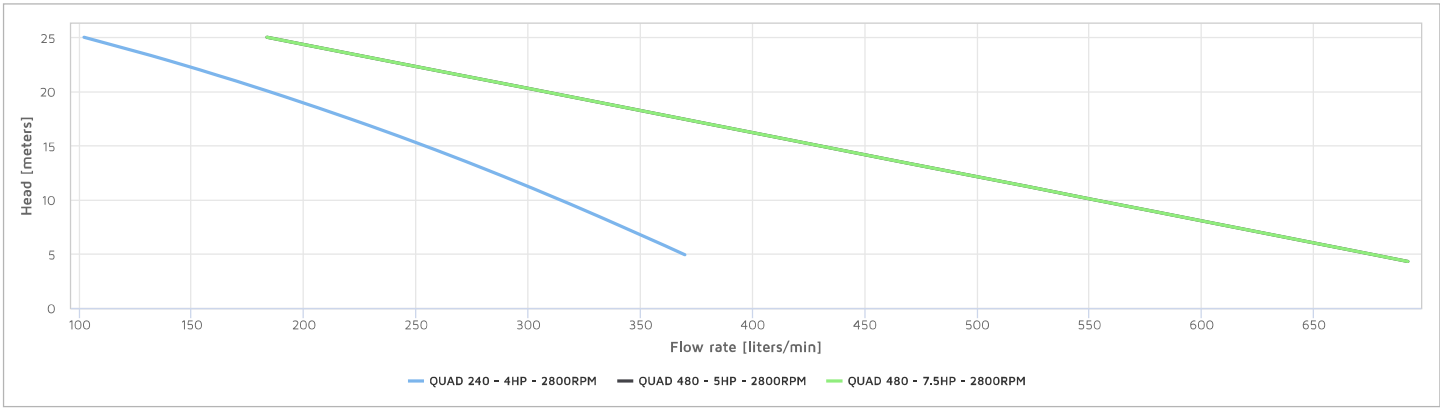
The pumps can also be supplied with DIN 11851, Garolla or Macon fittings.

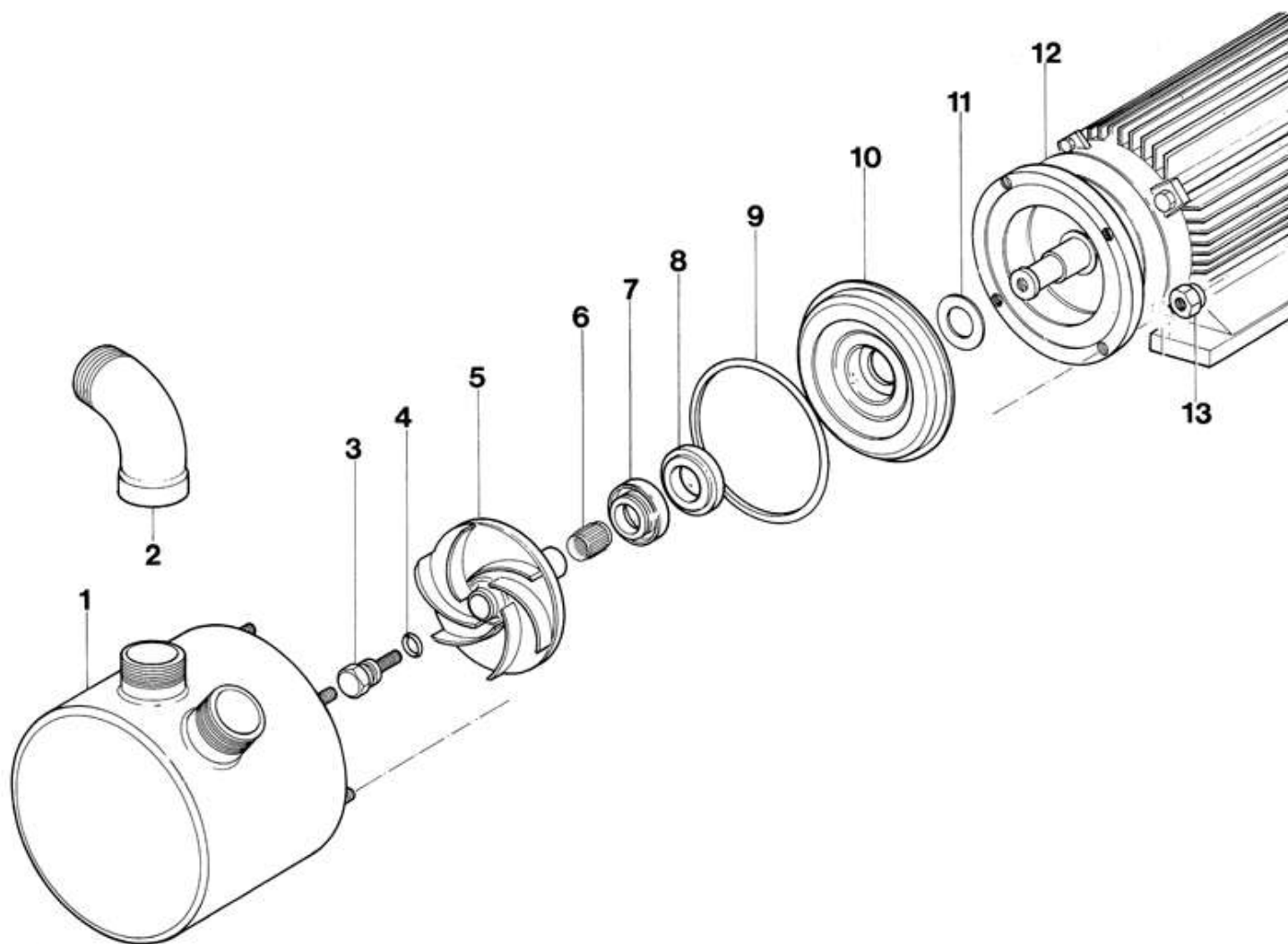
Technical Specifications

Power and capacity are referred to working with water

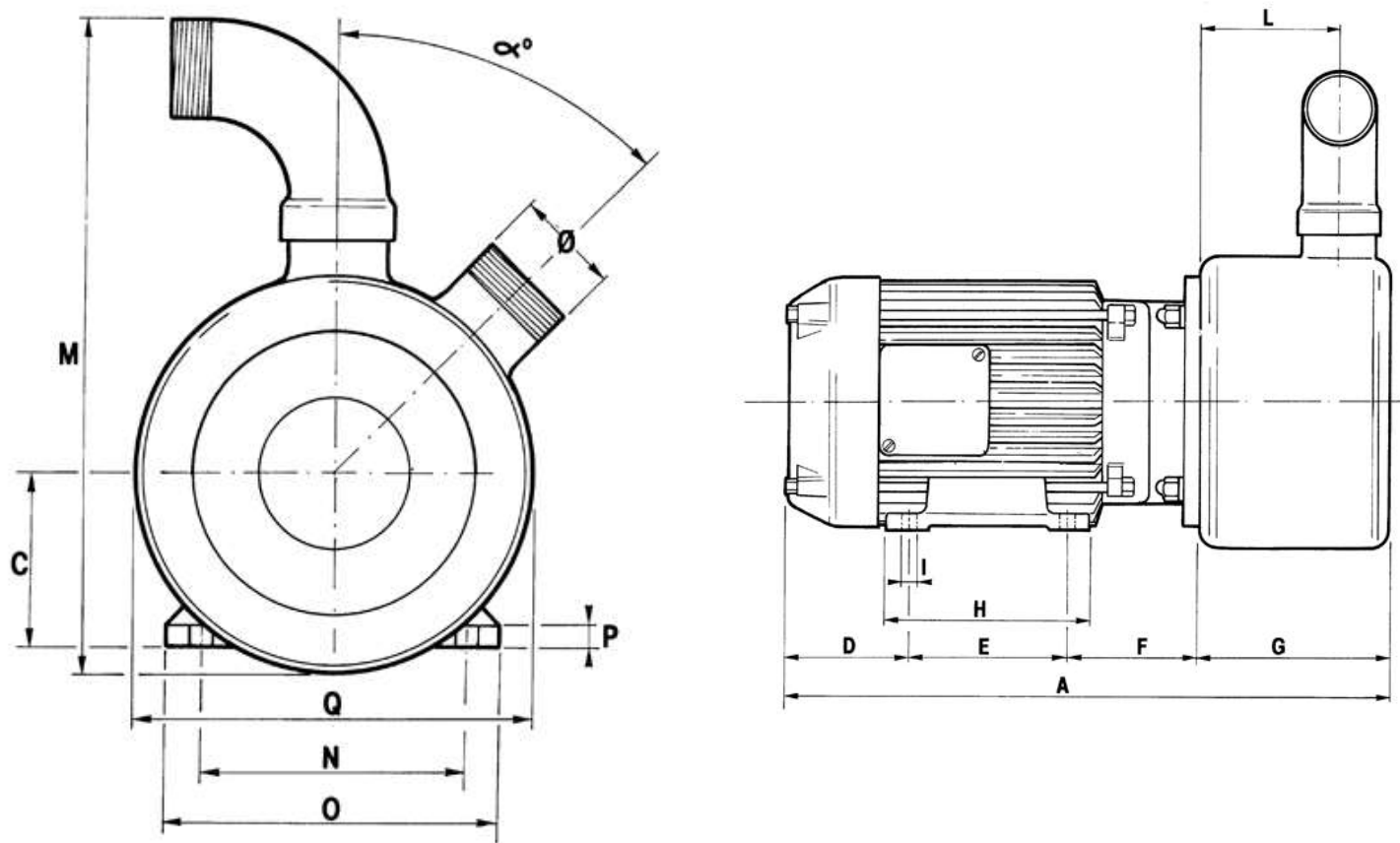
MOD	MOTOR			FLOW RATE [lt/min] ± 5%						Ø PORTS
	HP	RPM	TYPE	2 meters	5 meters	10 meters	15 meters	20 meters	25 meters	
QUAD 240	4	2800	Three-phase	399	369	314	253	184	102	Ø 2" BSP male thread
QUAD 480	5*	2800	Three-phase	748	675	552	429	306	184	Ø 2" BSP male thread
	7.5	2800	Three-phase	748	675	552	429	306	184	

*The electrical power of these models may vary according to the brand of the motors and the Atex execution. However, the performance of the pump remains unchanged.





REF	DESCRIPTION	MATERIALS
1	Casing Delivery Side	AISI 304 or 316 Stainless Steel
2	Outlet Bend	AISI 304 or 316 Stainless Steel
3	Impeller Screw	Stainless Steel
4	Impeller Screw O-Ring	NBR or FPM
5	Impeller	AISI 304 or 316 Stainless Steel
6	Compensation Ring	Steel
7	Seal Rotating Part	Graphite, Stainless Steel, NBR or FPM or PTFE
8	Seal Fixed Part	Ceramic, NBR or FPM or PTFE
9	Body Seal Ring	NBR or FPM
10	Seal Disc	AISI 304 or 316 Stainless Steel
11	Spacing Ring	Stainless Steel
12	Electric Motor	---
13	Lock Nut	Steel



MOD	MOTOR		Dimensions [mm]														α [deg]	OR
	HP	RPM	TO	C	D	AND	F	G	H	THE	THE	M	N	OR	P	Q		
QUAD 240	4	2800	481	100	98	140	98	145	170	16	104	400	160	200	13	240	45°	2"
QUAD 480	5	2800	486	100	98	140	98	150	170	16	104	400	160	200	13	240	45°	2"
	7.5	2800	515	100	120	140	110	150	180	18	104	400	185	220	14	240	45°	

Mencarelli Pompe e Valvole srl
Via Toscana 2 - 20091 Bresso (MI) - ITALY
Tel: [+39 2 66401099](tel:+39266401099) (3 lines) - Fax: [+39 2 66401103](tel:+39266401103)
VAT Number: 08770190158

Reporting of public grants (pursuant to articles 125-129 - Law 124/2017)

With reference to Article 1, paragraph 125-bis, Law No. 124/2017, it should be noted that the company received, during the 2020 financial year, guarantees from the State on repayable loans.

The National Register of State Aid pursuant to Article 52 of Law 234/2012 contains the aid received by our company during 2020. This information can be freely consulted by entering our tax code: 08770190158 at the following [link](#).